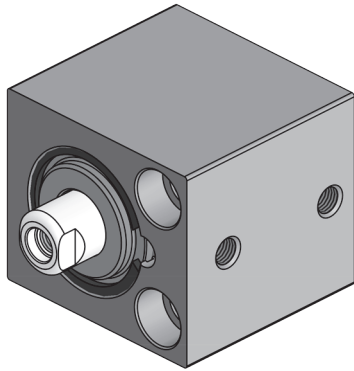


## WRD Serie Kompaktylinder/ WRD Series Compact Cylinders

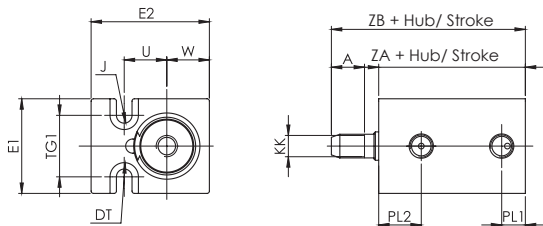


### Spezifikation/ Specification

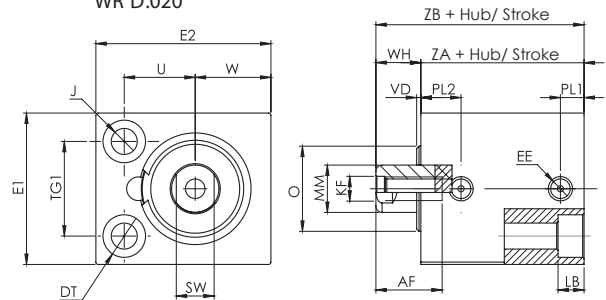
Bohrungsgröße/Bore Size	8	12	20	32	50	63
Arbeitstyp/Acting Type	Doppelwirkend/Double Acting					
Flüssigkeit/Fluid	Luft (40µm gefiltert) /Air (40µm filtered)					
Betriebsdruck/Op. Pressure	< 10 Ba r					
Temperatur/Temperature	0 ~ +80° C					
Magnetisch/Magnetic	-					
Gleitführung/Cush. Type	-					
Geschwindigkeitsbereich/Speed Range	< 500 mm/s					
Sensorschalter/Sensor Switches	-					

### Technische Zeichnung/Technical Drawing

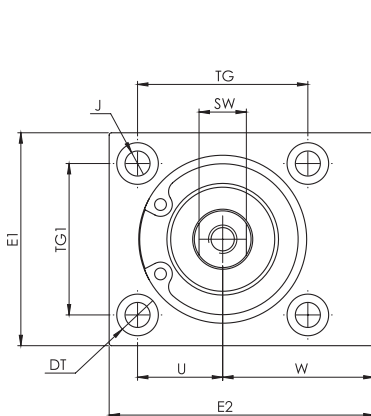
WR D.012



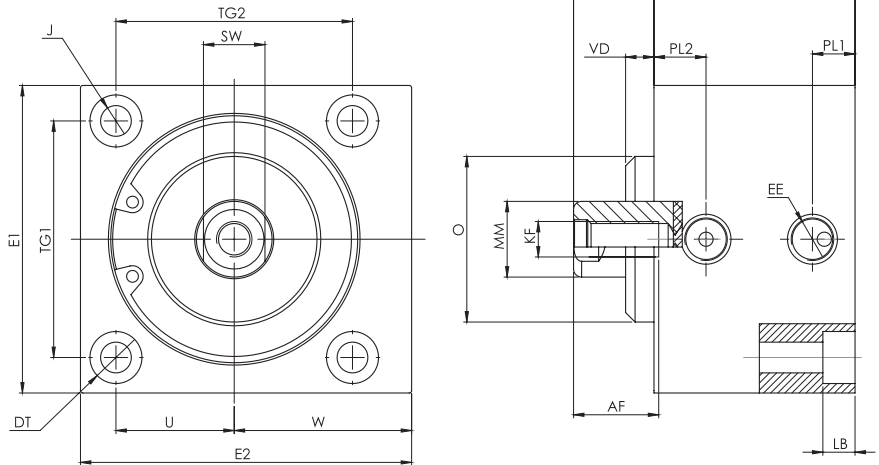
WR D.020



WR D.032



WR D.050/063

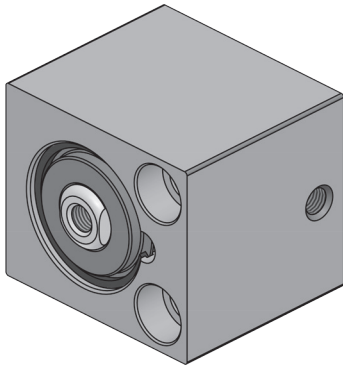


Ø mm	A	AF	DT Ø	E1	E2	EE	KF	KK	LB	MM Ø	J Ø	O Ø	PL1	PL2	SW	TG1	TG2	U	VD	W	WH	ZA +	ZB +	Standard
12	9	-	6	20	25	M5	-	M5	3.4	6	3.3	-	5	9	-	13	-	9	-	9	1	21	31	5 - 10 - 15 20 - 25 - 30
20	-	10	9	32	37	M5	M5	-	5.5	10	5.5	-	5	8.5	8	20	-	15	-	16	9.5	24.5	34	
32	-	15	9.5	45	56	G1/8	M6	-	5.7	12	10	32	8.5	12	10	32	36	18	3.5	24	12.5	33	45.5	
50	-	17	11	65	70	G1/8	M8	-	6.8	16	6.5	35	9	11	13	50	50	25	6	32.5	17	32.5	49.5	
63	-	17	14	80	85	G1/8	M8	-	9	-16	9	35	8	13	13	62	62	31	6.5	40	17	35.5	52.5	

### Bestellnummer/Ordering Code

Model/Model	Diameter DIA	Hub Stroke
WRD	012	0030
Doppelwirkend/Double Acting	Kolben (mm) Piston Dia	Hub (mm) Stroke

## WRS Serie Kompakzylinder/ WRS Series Compact Cylinders

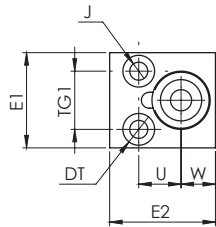


### Spezifikation/ Specification

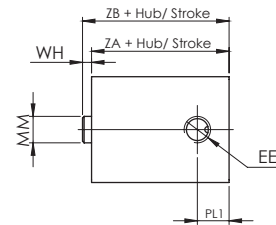
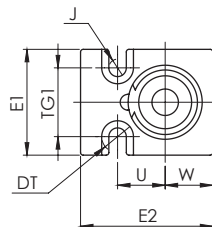
Bohrungsgröße/Bore Size	8	12	20	32	50	63
Arbeitstyp/Acting Type	Einzelwirkend/Single Acting					
Fluid/Fluid	Luft (40µm gefiltert) /Air (40µm filtered)					
Betriebsdruck/Op. Pressure	< 10 Bar					
Temperatur/Temperature	0 ~ +80° C					
Magnetisch/Magnetic	-					
Gleitführung/Cush. Type	-					
Geschwindigkeitsbereich/Speed Range	< 500 mm/s					
Sensorschalter/Sensor Switches	-					

### Technische Zeichnung/Technical Drawing

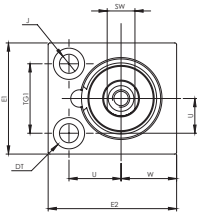
WRS.008



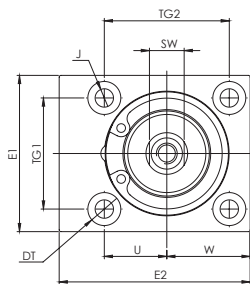
WRS.012



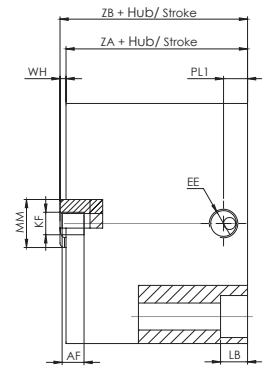
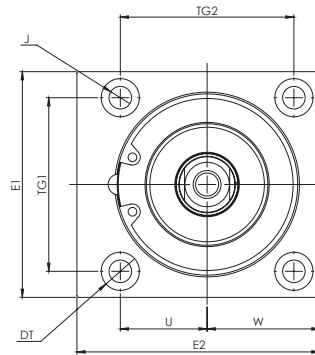
WRS.020



WRS.032



WRS.050/063



Ø mm	Hub/Stroke	AF	DT Ø	E1	E2	EE	KF	LB	MM Ø	J Ø	PL1	SW	TG1	TG2	U	W	WH	ZA +	ZB +
8	4	-	6	18	20	M5	-	3.1	4	3.4	5.5	-	11	-	8	6.5	1	12	13
12	4	-	6	20	25	M5	-	3.4	5	3.3	6	-	13	-	9	9	1	12	13
12	10	10	6	20	25	M5	M3	3.4	5	3.3	6	-	13	-	9	9	4	16	20
20	4	9	9	32	37	M5	M5	5.5	10	5.5	5	8	20	-	15	16	1	16	17
20	10	10	9	32	37	M5	M5	5.5	10	5.5	5	8	20	-	15	16	1	22	23
20	25	10	9	32	37	M5	M5	5.5	10	5.5	5	8	20	-	15	16	1	28	29
32	5	10	9.5	45	55	G1/8	M6	5.7	12	5.3	8.5	10	32	36	18	24	1	21	22
32	10	14.5	9.4	45	55	G1/8	M6	5.7	12	5.3	8.3	10	32	36	18	24	1	21	22
32	25	14.5	9.5	45	55	G1/8	M6	5.7	12	5.3	8.5	10	32	36	18	24	1	32.5	33.5
50	10	10.5	11	65	70	G1/8	M8	6.8	16	6.5	7.5	10	50	50	25	32.5	1	20	21
50	25	15.5	11	65	70	G1/8	M8	6.8	16	6.5	8	13	50	50	25	32.5	1	32.5	33.5
63	10	14.5	14	80	85	G1/8	M8	9	16	9	8	13	62	62	31	40	1	25	26
63	25	14.5	14	80	85	G1/8	M8	9	16	9	8	13	62	62	31	40	2	35.5	37.5

### Bestellnummer/Ordering Code

Model/Model	Diameter DIA	Hub Stroke
WRS	012	0030
Einzelwirkend/Single Acting	Kolben (mm) Piston Dia	Hub(mm) Stroke